

6 Chequers Road, Chorlton Green, Manchester, M21 9DY



JP & Brimelow
ESTATE AGENTS



6 3 3 E

VIDEO TOUR AVAILABLE An impressive and charming, SIX DOUBLE BEDROOM, Victorian, Cheshire interlocking, semi-detached property. Perfectly situated just off the ever-popular Beech Road in the heart of Chorlton Green.

Situated in a prime location near the vibrant Beech Road, offering a lively atmosphere and plenty of amenities at your doorstep including boutique shops, cafes, bars, and restaurants in the area plus the extensive nature reserve Chorlton is across the Green, and several excellent primary schools. Fantastic transport links are all just a short walk away giving you direct access into Manchester city centre, Didsbury, and further afield.

The property is spread over four floors including the converted basement and offers over 1,900 sqft of accommodation and in brief consists of; an entrance hall which allow access down into the converted basement, a good-sized lounge to the front aspect, a fitted kitchen which allows access into the useful utility area, and a dining area which has views and access out into the rear enclosed garden.

The basement offers a reception room with kitchenette, an office with en-suite shower room, and two useful storage cupboards.

To the first floor there are three double bedrooms and a white three-piece bathroom suite.

Stair leading to the second-floor landing reveal a further three good sized double bedrooms, one benefitting from a Velux balcony window. A white three-piece bathroom suite completed this fantastic property.

Other benefits include gas fired central heating, stripped and varnished floor boards, high ceilings, period features, ceiling coving, an alarm system, a driveway, and a good sized rear enclosed garden.

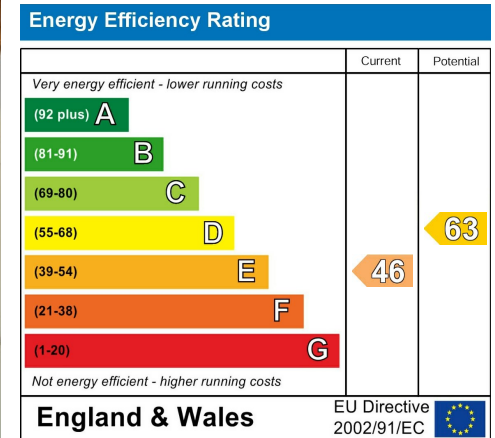
OFFERED WITH NO VENDOR CHAIN.

£975,000



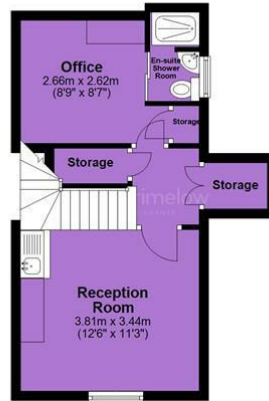


EPC Chart

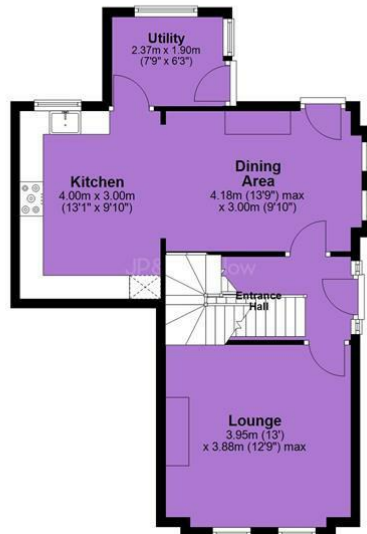


Tenure: Freehold Council Tax Band: C

Basement



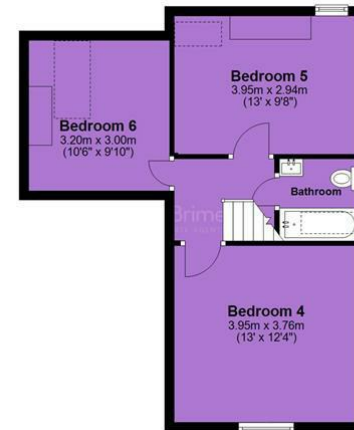
Ground Floor



First Floor



Second Floor



JP & Brimelow Estate Agents Ltd
430 Barlow Moor Road, Manchester, M21 8AD
Tel: 0161 8822233
E: sales@jpbrimelow.co.uk www.jpandbrimelow.co.uk



JP & Brimelow
ESTATE AGENTS

NOTICE: JP & Brimelow Estate Agents Ltd for themselves and for the vendors or lessors of this property whose agents they give notice that:

- (i) the particulars are set out as a general outline only for the guidance of intending purchasers or lessees, and do not constitute, nor constitute part of, an offer or contract;
- (ii) all descriptions, dimensions, references to the condition and necessary permissions for use and occupation, and other details are given in good faith and are believed to be correct but any intending purchasers or tenants should not rely on them as statements or representations of fact but must satisfy themselves by inspection or otherwise as to the correctness of each of them;
- (iii) no person in the employment of JP & Brimelow Estate Agents Ltd has any authority to make or give any representation or warranty whatever in relation to this property.

jpandbrimelowstateagents

@jpandbrimelow

